



Title Plan - DP 521901

Survey Number DP 521901
Surveyor Reference 31013 Stage 1 & 2
Surveyor Michael Rowan Hallam
Survey Firm Wood & Partners Consultants Ltd
Surveyor Declaration I Michael Rowan Hallam, being a licensed cadastral surveyor, certify that:
(a) this dataset provided by me and its related survey are accurate, correct and in accordance with the Cadastral Survey Act 2002 and the Rules for Cadastral Survey 2010, and
(b) the survey was undertaken by me or under my personal direction.
Declared on 30 Jul 2018 03:00 PM

Survey Details

Dataset Description Lots 1-66, 500, 610, 700, 900-901, 1000 being a subdivision of Lots 1 & 2 DP 324551, Lot 2 DP 343669 and Lot 2 DP 332054

Status Deposited

Land District North Auckland **Survey Class** Class A

Submitted Date 30/07/2018 **Survey Approval Date** 31/07/2018

Deposit Date 15/08/2018

Territorial Authorities

Whangarei District

Comprised In

CT 179292
CT 131557
CT 99249
CT 99248

Created Parcels

Parcels	Parcel Intent	Area	CT Reference
Lot 1 Deposited Plan 521901	Fee Simple Title	0.0626 Ha	826954
Lot 2 Deposited Plan 521901	Fee Simple Title	0.0605 Ha	826955
Lot 3 Deposited Plan 521901	Fee Simple Title	0.0601 Ha	826956
Lot 4 Deposited Plan 521901	Fee Simple Title	0.0600 Ha	826957
Lot 5 Deposited Plan 521901	Fee Simple Title	0.0617 Ha	826958
Lot 6 Deposited Plan 521901	Fee Simple Title	0.0710 Ha	826959
Lot 7 Deposited Plan 521901	Fee Simple Title	0.0721 Ha	826960
Lot 8 Deposited Plan 521901	Fee Simple Title	0.0689 Ha	826961
Lot 9 Deposited Plan 521901	Fee Simple Title	0.0643 Ha	826962
Lot 10 Deposited Plan 521901	Fee Simple Title	0.0640 Ha	826963
Lot 11 Deposited Plan 521901	Fee Simple Title	0.0653 Ha	826964
Lot 12 Deposited Plan 521901	Fee Simple Title	0.0630 Ha	826965
Lot 13 Deposited Plan 521901	Fee Simple Title	0.0624 Ha	826966
Lot 14 Deposited Plan 521901	Fee Simple Title	0.0653 Ha	826967
Lot 15 Deposited Plan 521901	Fee Simple Title	0.0621 Ha	826968
Lot 16 Deposited Plan 521901	Fee Simple Title	0.0603 Ha	826969

Title Plan - DP 521901

Created Parcels

Parcels	Parcel Intent	Area	CT Reference
Lot 17 Deposited Plan 521901	Fee Simple Title	0.0603 Ha	826970
Lot 18 Deposited Plan 521901	Fee Simple Title	0.0603 Ha	826971
Lot 19 Deposited Plan 521901	Fee Simple Title	0.0625 Ha	826972
Lot 20 Deposited Plan 521901	Fee Simple Title	0.0599 Ha	826973
Lot 21 Deposited Plan 521901	Fee Simple Title	0.0603 Ha	826974
Lot 22 Deposited Plan 521901	Fee Simple Title	0.0632 Ha	826975
Lot 23 Deposited Plan 521901	Fee Simple Title	0.0613 Ha	826976
Lot 24 Deposited Plan 521901	Fee Simple Title	0.0604 Ha	826977
Lot 25 Deposited Plan 521901	Fee Simple Title	0.0602 Ha	826978
Lot 26 Deposited Plan 521901	Fee Simple Title	0.0598 Ha	826979
Lot 27 Deposited Plan 521901	Fee Simple Title	0.0603 Ha	826980
Lot 28 Deposited Plan 521901	Fee Simple Title	0.0603 Ha	826981
Lot 29 Deposited Plan 521901	Fee Simple Title	0.0602 Ha	826982
Lot 30 Deposited Plan 521901	Fee Simple Title	0.0630 Ha	826983
Lot 31 Deposited Plan 521901	Fee Simple Title	0.0726 Ha	826984
Lot 32 Deposited Plan 521901	Fee Simple Title	0.0830 Ha	826985
Lot 33 Deposited Plan 521901	Fee Simple Title	0.0602 Ha	826986
Lot 34 Deposited Plan 521901	Fee Simple Title	0.0608 Ha	826987
Lot 35 Deposited Plan 521901	Fee Simple Title	0.0602 Ha	826988
Lot 36 Deposited Plan 521901	Fee Simple Title	0.0607 Ha	826989
Lot 37 Deposited Plan 521901	Fee Simple Title	0.0627 Ha	826990
Lot 38 Deposited Plan 521901	Fee Simple Title	0.0688 Ha	826991
Lot 39 Deposited Plan 521901	Fee Simple Title	0.0605 Ha	826992
Lot 40 Deposited Plan 521901	Fee Simple Title	0.0601 Ha	826993
Lot 41 Deposited Plan 521901	Fee Simple Title	0.0627 Ha	826994
Lot 42 Deposited Plan 521901	Fee Simple Title	0.0676 Ha	826995
Lot 43 Deposited Plan 521901	Fee Simple Title	0.0630 Ha	826996
Lot 44 Deposited Plan 521901	Fee Simple Title	0.0627 Ha	826997
Lot 45 Deposited Plan 521901	Fee Simple Title	0.0623 Ha	826998
Lot 46 Deposited Plan 521901	Fee Simple Title	0.0623 Ha	826999
Lot 47 Deposited Plan 521901	Fee Simple Title	0.0625 Ha	827000
Lot 48 Deposited Plan 521901	Fee Simple Title	0.0626 Ha	827001
Lot 49 Deposited Plan 521901	Fee Simple Title	0.0627 Ha	827002
Lot 50 Deposited Plan 521901	Fee Simple Title	0.0628 Ha	827003
Lot 51 Deposited Plan 521901	Fee Simple Title	0.0688 Ha	827004
Lot 52 Deposited Plan 521901	Fee Simple Title	0.0646 Ha	827005
Lot 53 Deposited Plan 521901	Fee Simple Title	0.0645 Ha	827006
Lot 54 Deposited Plan 521901	Fee Simple Title	0.0646 Ha	827007
Lot 55 Deposited Plan 521901	Fee Simple Title	0.0647 Ha	827008
Lot 56 Deposited Plan 521901	Fee Simple Title	0.0648 Ha	827009
Lot 57 Deposited Plan 521901	Fee Simple Title	0.0648 Ha	827010
Lot 58 Deposited Plan 521901	Fee Simple Title	0.0649 Ha	827011
Lot 59 Deposited Plan 521901	Fee Simple Title	0.0650 Ha	827012
Lot 60 Deposited Plan 521901	Fee Simple Title	0.0651 Ha	827013



Title Plan - DP 521901

Created Parcels

Parcels	Parcel Intent	Area	CT Reference
Lot 61 Deposited Plan 521901	Fee Simple Title	0.0651 Ha	827014
Lot 62 Deposited Plan 521901	Fee Simple Title	0.0652 Ha	827015
Lot 63 Deposited Plan 521901	Fee Simple Title	0.0653 Ha	827016
Lot 64 Deposited Plan 521901	Fee Simple Title	0.0666 Ha	827017
Lot 65 Deposited Plan 521901	Fee Simple Title	0.0630 Ha	827018
Lot 66 Deposited Plan 521901	Fee Simple Title	0.0678 Ha	827019
Lot 1000 Deposited Plan 521901	Fee Simple Title	9.7655 Ha	828148
Lot 500 Deposited Plan 521901	Vesting on Deposit for Local Purpose Reserve	1.1063 Ha	828146
Lot 610 Deposited Plan 521901	Vesting on Deposit for Recreation Reserve (Territorial Authority)	0.4179 Ha	828147
Lot 700 Deposited Plan 521901	Fee Simple Title	0.0269 Ha	Multiple
	Road	0.9583 Ha	
	Road	0.6649 Ha	
Area A Deposited Plan 521901	Easement		
Area B Deposited Plan 521901	Easement		
Area C Deposited Plan 521901	Easement		
Area D Deposited Plan 521901	Easement		
Total Area		<hr/> 17.1410 Ha	

Schedule / Memorandum

Land Registration District

North Auckland

Survey Number

LT 521901

Territorial Authority (the Council)

Whangarei District

Schedule of Existing Easements in Gross

Last Edited: 01 Mar 2018 11:48:02

<u>Purpose</u>	<u>Shown</u>	<u>Servient Tenement</u>	<u>Creating Document Reference</u>
Right to drain sewage, water	A	Lot 1000	EI 6389851.4

Memorandum of Easements in Gross

Last Edited: 06 Mar 2018 09:51:55

<u>Purpose</u>	<u>Shown</u>	<u>Servient Tenement</u>	<u>Grantee</u>
Right to convey telecommunications, computer media	D, C	Lot 700	Chorus New Zealand Limited
Right to drain storm water	B	Lot 26	Whangarei District Council
Right to drain storm water, sewage	C	Lot 700	Whangarei District Council

Amalgamation Conditions

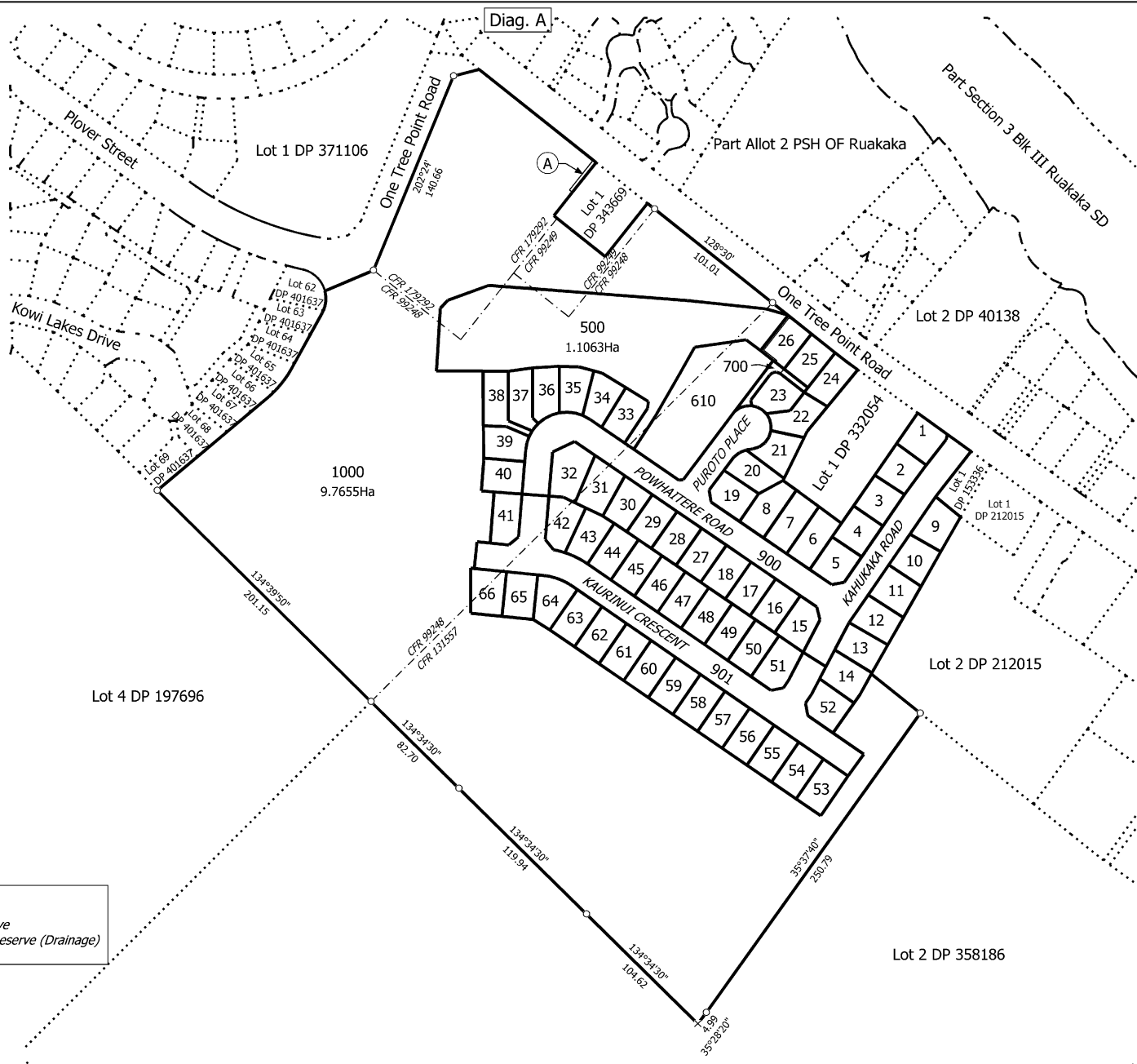
Last Edited: 05 Mar 2018 10:06:04

THAT LOT 700 HEREON (LEGAL ACCESS) BE HELD AS TO THREE UNDIVIDED ONE-THIRD SHARES BY THE OWNERS OF LOTS 24 - 26 HEREON AS TENANTS IN COMMON IN THE SAID SHARES AND THAT INDIVIDUAL COMPUTER REGISTERS BE ISSUED IN ACCORDANCE THEREWITH.

Notes

Last Edited: 06 Mar 2018 10:47:52

Existing Easements in Gross to be Surrendered Purpose	Formerly Shown	Servient Tenement	Grantee	Created by
Electricity Easement	A DP 332054	Lot 2 DP 332054	Northpower Limited	EI5923983.3



Note:
 Lots 900 & 901 to vest as Road
 Lot 610 to vest as Recreation Reserve
 Lot 500 to vest as Local Purpose Reserve (Drainage)
 all in the Whangarei District Council

T 1/8

Land District: North Auckland

Lots 1-66, 500, 610, 700, 900-901, 1000 being a subdivision of Lots 1 & 2 DP 324551, Lot 2 DP 343669 and Lot 2 DP 332054

Surveyor: Michael Rowan Hallam
 Firm: Wood & Partners Consultants Ltd

Title Plan
 DP 521901

Digitally Generated Plan
 Generated on: 17/08/2018 09:17am Page 5 of 12

Deposited on: 15/08/2018



T 2/8

Land District: North Auckland

Lots 1-66, 500, 610, 700, 900-901, 1000 being a subdivision of Lots 1 & 2 DP 324551, Lot 2 DP 343669 and Lot 2 DP 332054

Surveyor: Michael Rowan Hallam
Firm: Wood & Partners Consultants Ltd

Title Plan
DP 521901

Digitally Generated Plan
Generated on: 17/08/2018 09:17am Page 6 of 12

Deposited on: 15/08/2018



Diag. AE



T 3/8

Land District: North Auckland

Digitally Generated Plan

Generated on: 17/08/2018 09:17am Page 7 of 12

Lots 1-66, 500, 610, 700, 900-901, 1000 being a subdivision of Lots 1 & 2 DP 324551, Lot 2 DP 343669 and Lot 2 DP 332054

Surveyor: Michael Rowan Halliam
Firm: Wood & Partners Consultants Ltd

**Title Plan
DP 521901**

Deposited on: 15/08/2018



Diag. AF



T 4/8

Land District: North Auckland

Digitally Generated Plan

Generated on: 17/08/2018 09:17am Page 8 of 12

Lots 1-66, 500, 610, 700, 900-901, 1000 being a subdivision of Lots 1 & 2 DP 324551, Lot 2 DP 343669 and Lot 2 DP 332054

Surveyor: Michael Rowan Hallam

Firm: Wood & Partners Consultants Ltd

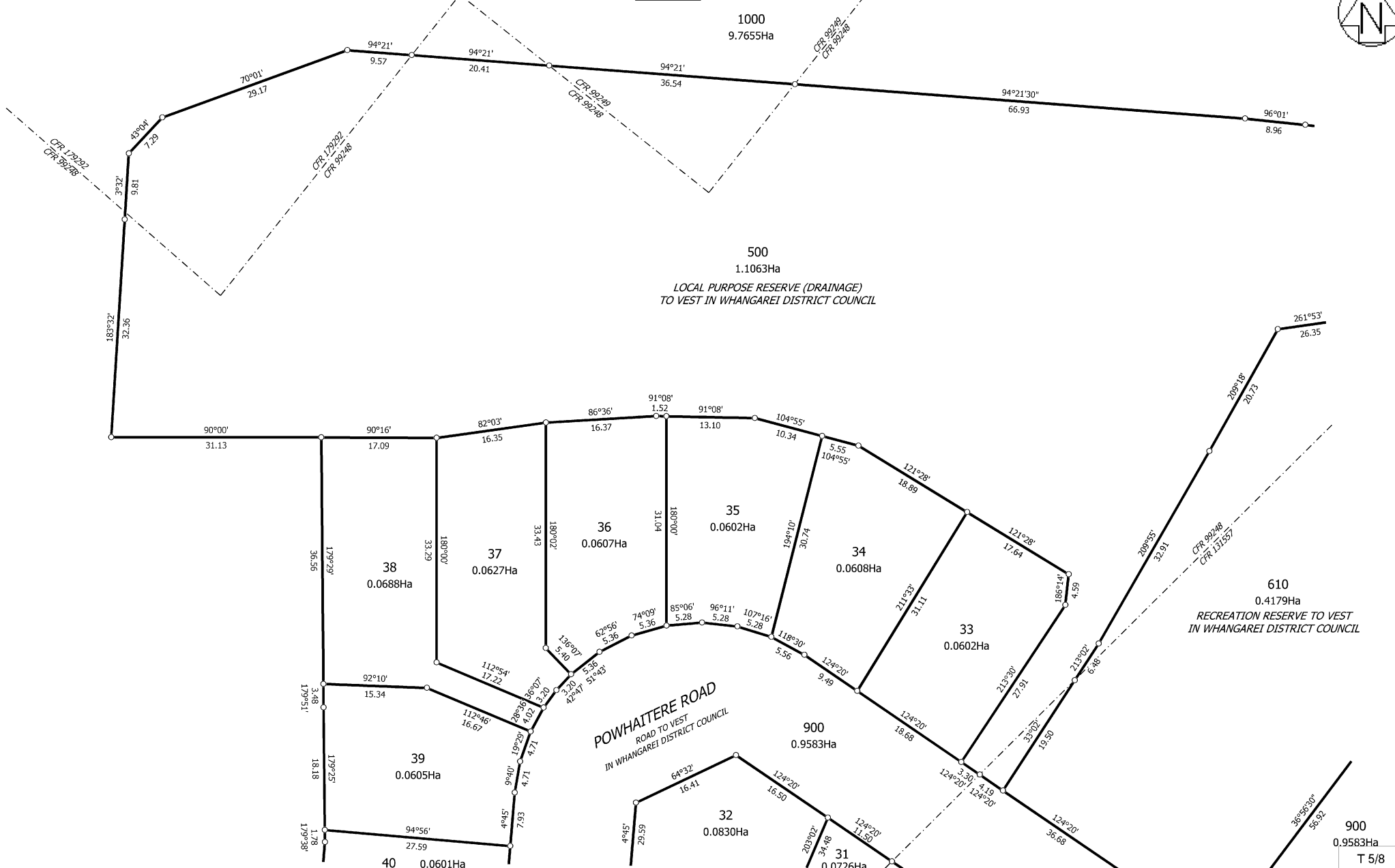
Title Plan

DP 521901

Deposited on: 15/08/2018



Diag. AC



Land District: North Auckland

Lots 1-66, 500, 610, 700, 900-901, 1000 being a subdivision of Lots 1 & 2 DP 324551, Lot 2 DP 343669 and Lot 2 DP 332054

Surveyor: Michael Rowan Hallam
Firm: Wood & Partners Consultants Ltd

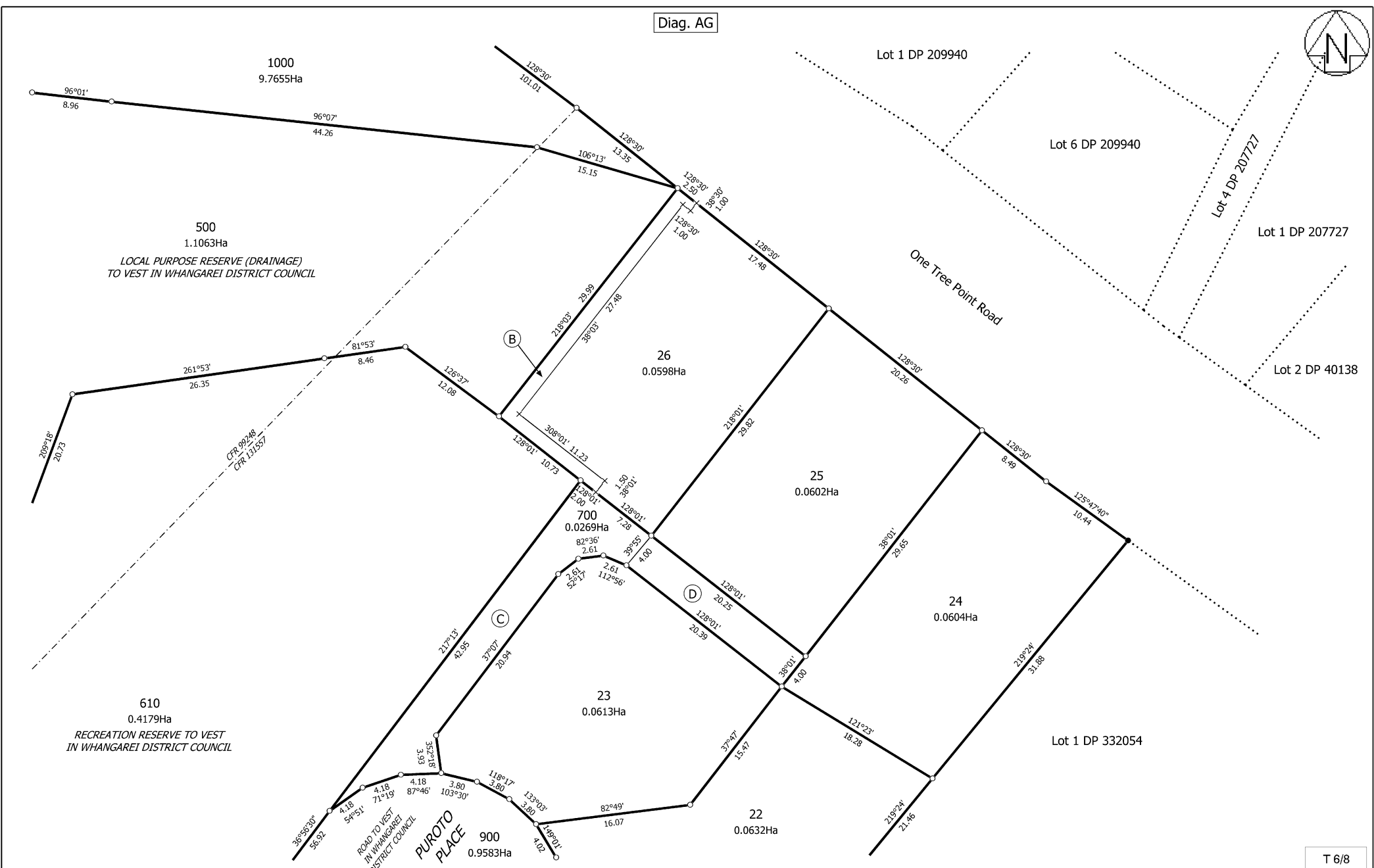
Title Plan
DP 521901

Deposited on: 15/08/2018

Digitally Generated Plan

Generated on: 17/08/2018 09:17am Page 9 of 12

Diag. AG



T 6/8

Land District: North Auckland

Digitally Generated Plan
 Generated on: 17/08/2018 09:17am Page 10 of 12

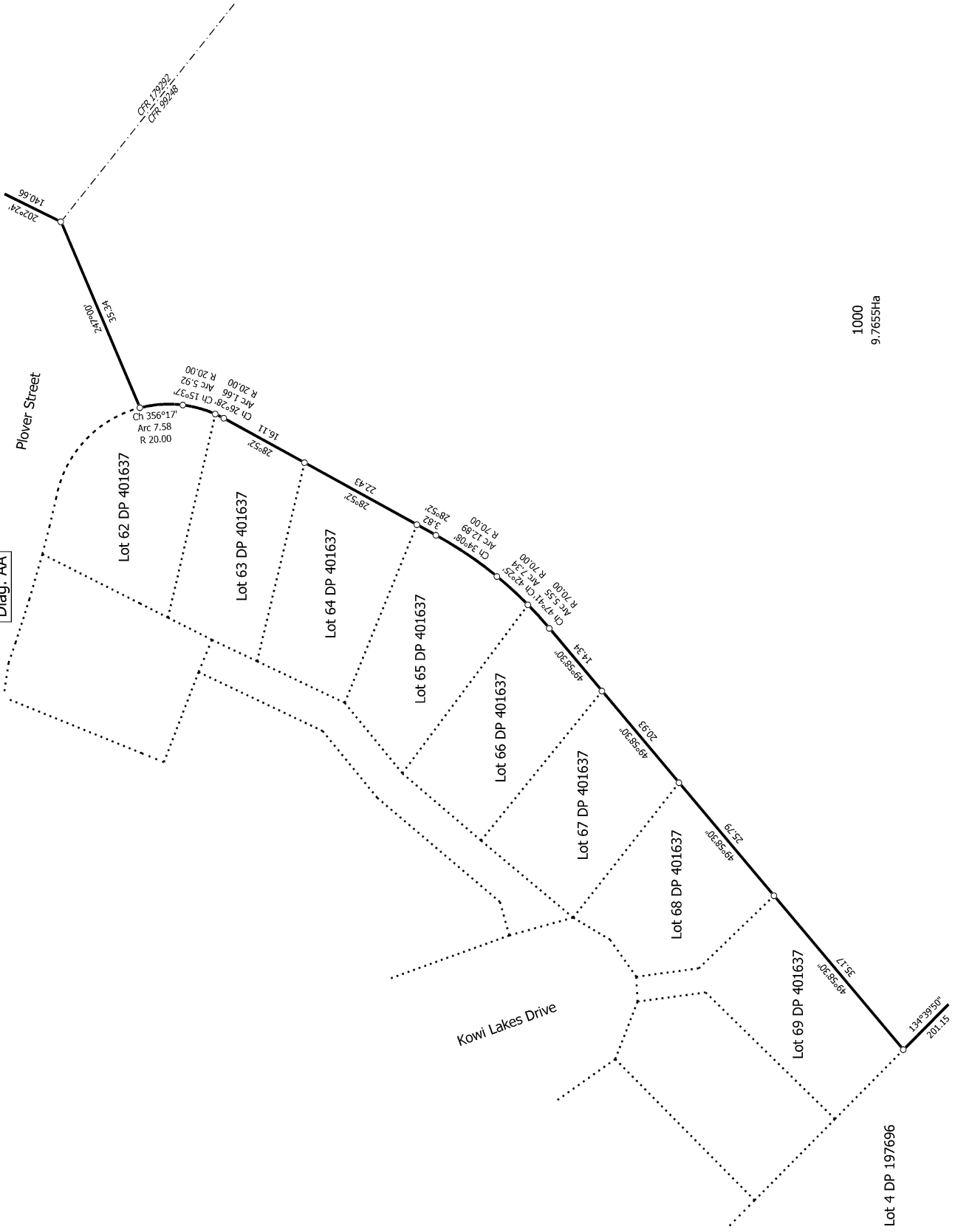
Lots 1-66, 500, 610, 700, 900-901, 1000 being a subdivision of Lots 1 & 2 DP 324551, Lot 2 DP 343669 and Lot 2 DP 332054

Surveyor: Michael Rowan Hallam
 Firm: Wood & Partners Consultants Ltd

Title Plan
 DP 521901
 Deposited on: 15/08/2018



Diag. AA



1000
9.7655Ha

T 7/8

Land District: North Auckland

Digitally Generated Plan

Generated on: 17/08/2018 09:17am Page 11 of 12

Lots 1-66, 500, 610, 700, 900-901, 1000 being a subdivision of Lots 1 & 2 DP 324551, Lot 2 DP 343669 and Lot 2 DP 332054

Surveyor: Michael Rowan Hallam
Firm: Wood & Partners Consultants Ltd

**Title Plan
DP 521901**

Deposited on: 15/08/2018

